

Anti-H_ITGB6 hlgG1 Reference Antibody (h2A2)

Product Information

Product Name	Anti-H_ITGB6 hlgG1 Reference Antibody (h2A2)
Storage temp.	Store at 2-8°C short term (1-2 weeks).Store at $\leq -20^{\circ}\text{C}$ long term. Avoid repeated freeze-thaw.
Catalog# / Size	GM-87349MAB-1mg / 1 mg GM-87349MAB-5mg / 5 mg GM-87349MAB-25mg / 25 mg GM-87349MAB-50mg / 50 mg GM-87349MAB-100mg / 100 mg

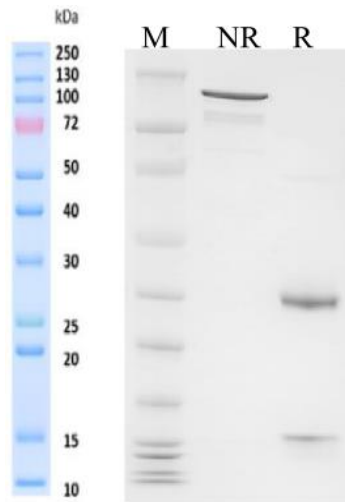
Antibody Information

Expression System	CHO
Aggregation	< 5% as determined by SEC-HPLC
Purity	> 95% as determined by SDS-PAGE
Endotoxin	< 1 EU/mg, determined by LAL gel clotting assay
Sterility	0.2 μm Filtered
Target	ITGB6
Clone	h2A2
Alternative Names	Integrin beta-6
Source/Isotype	Human IgG1 (KDEL),kappa
Application	/
Description	ITGB6 is the $\beta 6$ subunit of the integrin $\alpha\beta 6$, which is a crucial subunit controlling the expression of the entire heterodimer $\alpha\beta 6$. (ITGB6) is the limiting subunit for the formation of the $\alpha\beta 6$ integrin, as it can only bind with α . Therefore, the expression of the $\alpha\beta 6$ integrin depends on the transcriptional activity of the $\beta 6$ integrin gene, which is only expressed in epithelial cells. The integrin $\alpha\beta 6$ is exclusively expressed on epithelial cells and is expressed at low levels in most normal healthy tissues. However, it is frequently upregulated in diseases such as cancer and fibrosis, with an estimated one-third of all solid tumors showing upregulation, which is associated with disease progression and poor prognosis. Multiple studies have shown that the severity of many cancers, including lung, breast, colon, gastric, and ovarian cancer, is related to the expression of $\alpha\beta 6$. In summary, $\alpha\beta 6$ plays a regulatory role in epithelial remodeling during development, tissue repair, and tumor formation.
Formulation	phosphate-buffered solution, pH 7.4.

Version:3.1.240724

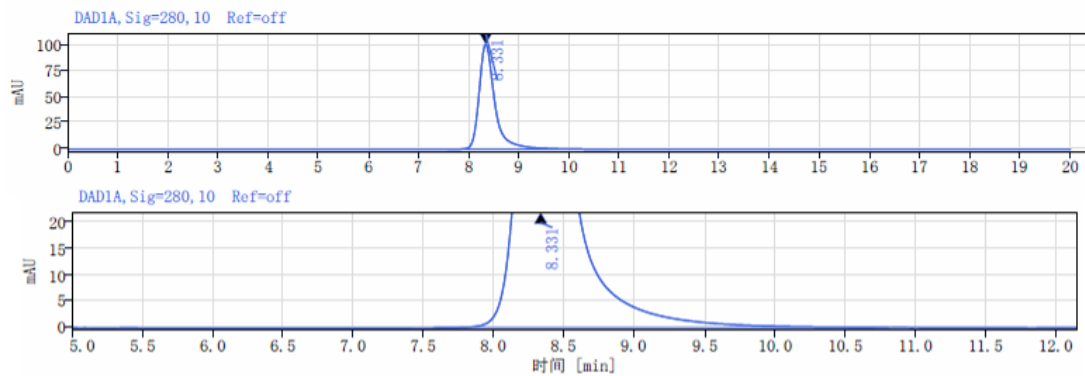
Data Examples

SDS-PAGE



On SDS-PAGE under reducing (R)/non-reducing(N-R) condition. The gel was stained overnight with Coomassie Blue. The purity of the protein is greater than 95%.

SEC-HPLC



The purity of this product is more than 95% verified by SEC-HPLC